

# DEAL POST TEST 2019-20 - SCHOOL REPORT CARD

KARAIKAL  
DIS Z1

34040600101 GPS - POOVAM

All Grades represent the following scorings in % \*

GRADE A - >75	* School Status Grade represents the total enrollment of the school (Not %)
GRADE B - 51 TO 75	
GRADE C - 26 TO 50	
GRADE D - 10 TO 25	
GRADE E - <10	

Note: The Values given in the brackets denote the difference between the Pre and Post Test Scores.  
(For Example: If the Pre-Test Grade is 'C' and the Post-Test Grade is 'A', then the progress is +2)

## SCHOOL GRADE - AB

Status Gr. A (0) Performance Gr. B(+1)

### OVERALL PERFORMANCE GRADES

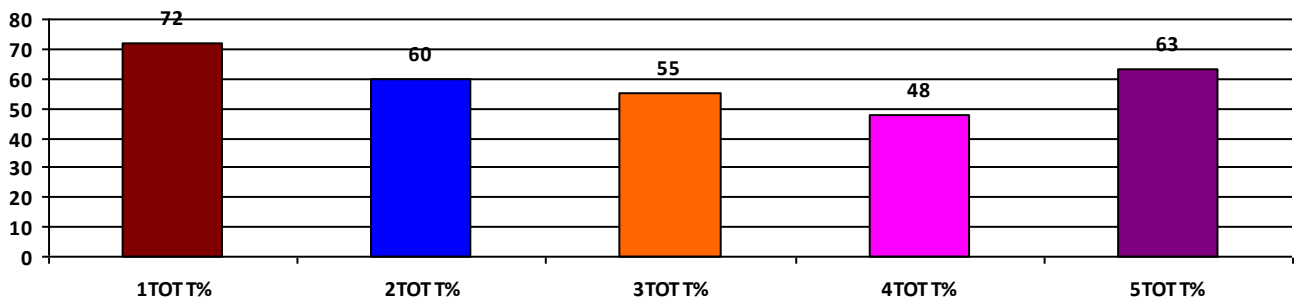
	Boys	Girls	Total
SCHOOL GR.	B	B	B
Diff. to Pre-Test	(+1)	(0)	(+1)
DIST. GR.	B	B	B
STATE GR.	B	B	B

### CLASSWISE APPEARED

DETAILS	I STD	II STD	III STD	IV STD	V STD
BOYS	8	11	10	8	5
GIRLS	5	5	15	10	11
TOTAL	13	16	25	18	16
Diff. to Pre-Test	(+4)	(0)	(+1)	(-1)	(+1)

### CLASSWISE PERFORMANCE GRADES (% of marks)

DETAILS	I STD	II STD	III STD	IV STD	V STD
%	72	60	55	48	63
SCHOOL GR.	B	B	B	C	B
Diff. to Pre-Test	(0)	(0)	(+1)	(0)	(+1)
DIST. GR.	B	B	B	B	B
STATE GR.	A	B	B	B	B



### GRADEWISE PERFORMANCE (NO. OF STUDENTS)

ENGLISH	1 Std	2 Std	3 Std	4 Std	5 Std	TAMIL	1 Std	2 Std	3 Std	4 Std	5 Std
GR. A	5	10	1	2	6	GR. A	5	2	7	5	6
GR. B	6	4	8	3	5	GR. B	6	3	6	6	7
GR. C	2	1	16	8	4	GR. C	2	9	12	2	2
GR. D	0	1	0	5	1	GR. D	0	2	0	4	1
GR. E	0	0	0	0	0	GR. E	0	0	0	1	0

# DEAL POST TEST 2019-20 - SCHOOL REPORT CARD

KARAIKAL  
DIS Z1

34040600402 **GPS - KALIKUPPAM**

All Grades represent the following scorings in % \*

GRADE A - >75	* School Status Grade represents the total enrollment of the school (Not %)
GRADE B - 51 TO 75	
GRADE C - 26 TO 50	
GRADE D - 10 TO 25	
GRADE E - <10	

Note: The Values given in the brackets denote the difference between the Pre and Post Test Scores.  
(For Example: If the Pre-Test Grade is 'C' and the Post-Test Grade is 'A', then the progress is +2)

## SCHOOL GRADE - AB

Status Gr. A (0) Performance Gr. B(+1)

### OVERALL PERFORMANCE GRADES

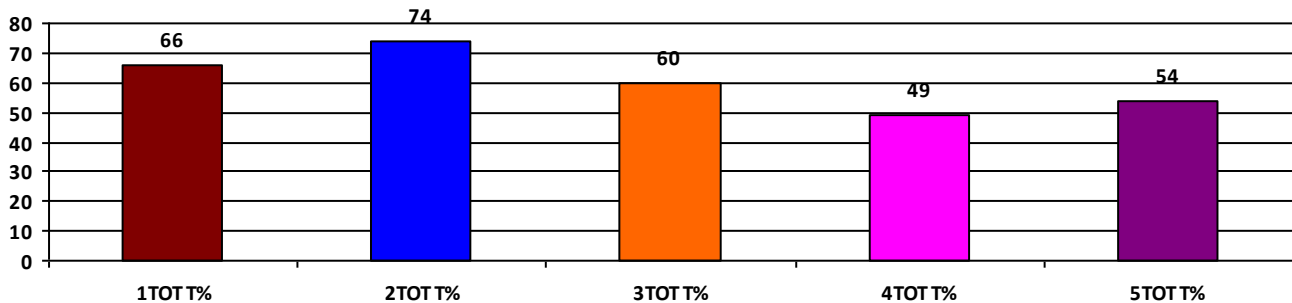
	Boys	Girls	Total
SCHOOL GR.	B	B	B
Diff. to Pre-Test	(+1)	(+1)	(+1)
DIST. GR.	B	B	B
STATE GR.	B	B	B

### CLASSWISE APPEARED

DETAILS	I STD	II STD	III STD	IV STD	V STD
BOYS	3	9	11	10	10
GIRLS	5	5	6	10	13
TOTAL	8	14	17	20	23
Diff. to Pre-Test	(+2)	(+1)	(0)	(-1)	(0)

### CLASSWISE PERFORMANCE GRADES (% of marks)

DETAILS	I STD	II STD	III STD	IV STD	V STD
%	66	74	60	49	54
SCHOOL GR.	B	B	B	C	B
Diff. to Pre-Test	(+1)	(+1)	(+1)	(0)	(+1)
DIST. GR.	B	B	B	B	B
STATE GR.	A	B	B	B	B



### GRADEWISE PERFORMANCE (NO. OF STUDENTS)

ENGLISH	1 Std	2 Std	3 Std	4 Std	5 Std	TAMIL	1 Std	2 Std	3 Std	4 Std	5 Std
GR. A	2	2	2	1	5	GR. A	2	10	8	5	8
GR. B	5	10	8	8	6	GR. B	5	3	5	6	5
GR. C	1	2	5	3	7	GR. C	1	1	4	4	5
GR. D	0	0	2	7	3	GR. D	0	0	0	5	5
GR. E	0	0	0	1	2	GR. E	0	0	0	0	0

# DEAL POST TEST 2019-20 - SCHOOL REPORT CARD

KARAIKAL  
DIS Z1

34040601301 **GPS - KEEZHAKASAKUDY**

All Grades represent the following scorings in % \*

GRADE A - >75	
GRADE B - 51 TO 75	* School Status Grade
GRADE C - 26 TO 50	represents the total
GRADE D - 10 TO 25	enrollment of the
GRADE E - <10	school (Not %)

Note: The Values given in the brackets denote the difference between the Pre and Post Test Scores.  
(For Example: If the Pre-Test Grade is 'C' and the Post-Test Grade is 'A', then the progress is +2)

## SCHOOL GRADE - BB

Status Gr. B (0) Performance Gr. B (0)

### OVERALL PERFORMANCE GRADES

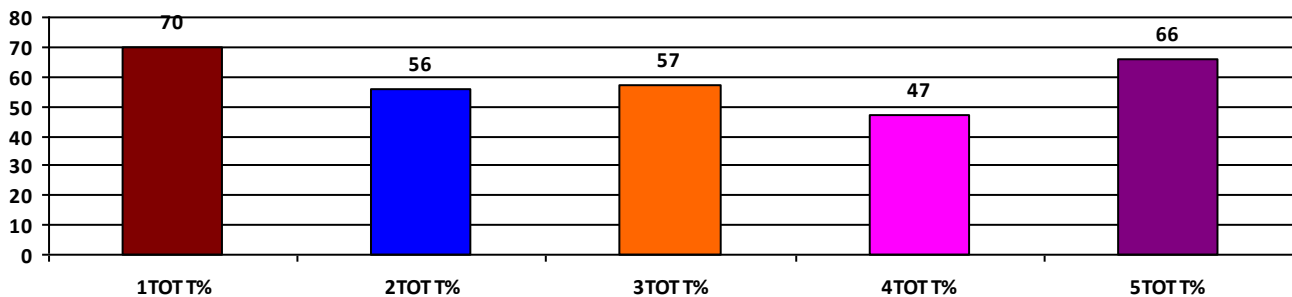
	Boys	Girls	Total
SCHOOL GR.	B	B	B
Diff. to Pre-Test	(+1)	(0)	(0)
DIST. GR.	B	B	B
STATE GR.	B	B	B

### CLASSWISE APPEARED

DETAILS	I STD	II STD	III STD	IV STD	V STD
BOYS	7	2	7	5	3
GIRLS	4	5	7	6	6
TOTAL	11	7	14	11	9
Diff. to Pre-Test	(+1)	(0)	(-1)	(0)	(-1)

### CLASSWISE PERFORMANCE GRADES (% of marks)

DETAILS	I STD	II STD	III STD	IV STD	V STD
%	70	56	57	47	66
SCHOOL GR.	B	B	B	C	B
Diff. to Pre-Test	(0)	(+1)	(0)	(0)	(0)
DIST. GR.	B	B	B	B	B
STATE GR.	A	B	B	B	B



### GRADEWISE PERFORMANCE (NO. OF STUDENTS)

ENGLISH	1 Std	2 Std	3 Std	4 Std	5 Std	TAMIL	1 Std	2 Std	3 Std	4 Std	5 Std
GR. A	4	0	0	0	2	GR. A	6	5	7	1	4
GR. B	4	5	8	1	5	GR. B	4	0	1	7	3
GR. C	2	0	3	7	2	GR. C	1	0	5	0	2
GR. D	1	0	3	3	0	GR. D	0	0	1	3	0
GR. E	0	2	0	0	0	GR. E	0	2	0	0	0

# DEAL POST TEST 2019-20 - SCHOOL REPORT CARD

KARAIKAL  
DIS Z1

34040601302 **GPS - KEEZHAKASAKUDYMEDU**

All Grades represent the following scorings in % \*

GRADE A - >75	* School Status Grade represents the total enrollment of the school (Not %)
GRADE B - 51 TO 75	
GRADE C - 26 TO 50	
GRADE D - 10 TO 25	
GRADE E - <10	

Note: The Values given in the brackets denote the difference between the Pre and Post Test Scores.  
(For Example: If the Pre-Test Grade is 'C' and the Post-Test Grade is 'A', then the progress is +2)

## SCHOOL GRADE - CA

Status Gr. C (0) Performance Gr. A(+1)

### OVERALL PERFORMANCE GRADES

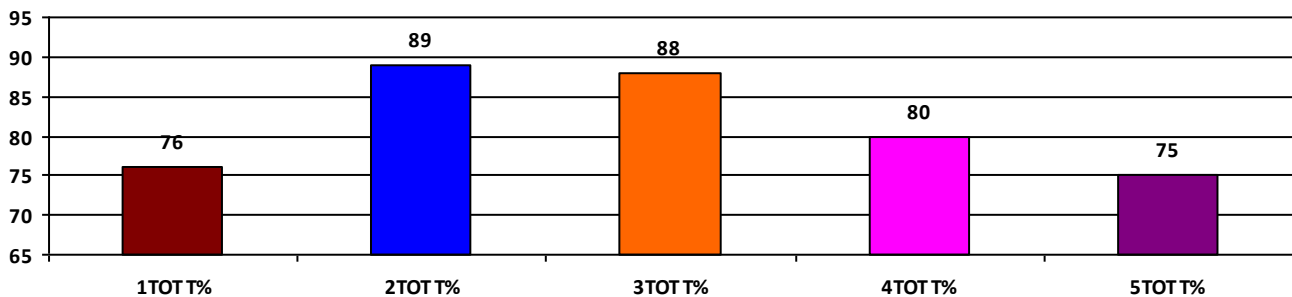
	Boys	Girls	Total
SCHOOL GR.	A	A	A
Diff. to Pre-Test	(+1)	(+1)	(+1)
DIST. GR.	B	B	B
STATE GR.	B	B	B

### CLASSWISE APPEARED

DETAILS	I STD	II STD	III STD	IV STD	V STD
BOYS	2	1	5	1	4
GIRLS	3	4	3	4	5
TOTAL	5	5	8	5	9
Diff. to Pre-Test	(0)	(0)	(-1)	(-2)	(0)

### CLASSWISE PERFORMANCE GRADES (% of marks)

DETAILS	I STD	II STD	III STD	IV STD	V STD
%	76	89	88	80	75
SCHOOL GR.	A	A	A	A	B
Diff. to Pre-Test	(+1)	(+1)	(+1)	(+1)	(0)
DIST. GR.	B	B	B	B	B
STATE GR.	A	B	B	B	B



### GRADEWISE PERFORMANCE (NO. OF STUDENTS)

ENGLISH	1 Std	2 Std	3 Std	4 Std	5 Std	TAMIL	1 Std	2 Std	3 Std	4 Std	5 Std
GR. A	2	5	7	2	6	GR. A	4	4	7	4	4
GR. B	3	0	1	3	2	GR. B	1	1	1	1	4
GR. C	0	0	0	0	1	GR. C	0	0	0	0	1
GR. D	0	0	0	0	0	GR. D	0	0	0	0	0
GR. E	0	0	0	0	0	GR. E	0	0	0	0	0

# DEAL POST TEST 2019-20 - SCHOOL REPORT CARD

KARAIKAL  
DIS Z1

34040601401 **GPS - THALATHERU PET**

All Grades represent the following scorings in % \*

GRADE A - >75	* School Status Grade represents the total enrollment of the school (Not %)
GRADE B - 51 TO 75	
GRADE C - 26 TO 50	
GRADE D - 10 TO 25	
GRADE E - <10	

Note: The Values given in the brackets denote the difference between the Pre and Post Test Scores.  
(For Example: If the Pre-Test Grade is 'C' and the Post-Test Grade is 'A', then the progress is +2)

## SCHOOL GRADE - CA

Status Gr. C (0) Performance Gr. A(+1)

### OVERALL PERFORMANCE GRADES

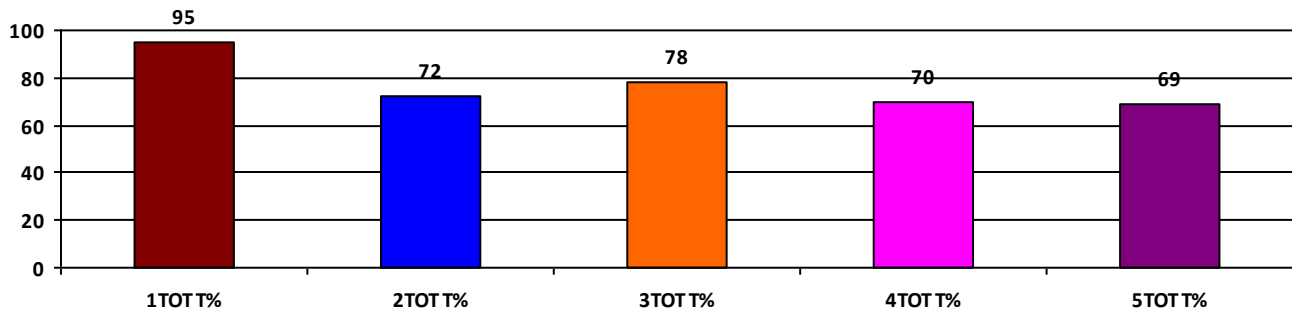
	Boys	Girls	Total
SCHOOL GR.	A	A	A
Diff. to Pre-Test	(+2)	(+1)	(+1)
DIST. GR.	B	B	B
STATE GR.	B	B	B

### CLASSWISE APPEARED

DETAILS	I STD	II STD	III STD	IV STD	V STD
BOYS	7	3	3	7	3
GIRLS	4	5	7	2	4
TOTAL	11	8	10	9	7
Diff. to Pre-Test	(0)	(-1)	(0)	(-1)	(0)

### CLASSWISE PERFORMANCE GRADES (% of marks)

DETAILS	I STD	II STD	III STD	IV STD	V STD
%	95	72	78	70	69
SCHOOL GR.	A	B	A	B	B
Diff. to Pre-Test	(+1)	(0)	(+1)	(+1)	(+1)
DIST. GR.	B	B	B	B	B
STATE GR.	A	B	B	B	B



### GRADEWISE PERFORMANCE (NO. OF STUDENTS)

ENGLISH	1 Std	2 Std	3 Std	4 Std	5 Std	TAMIL	1 Std	2 Std	3 Std	4 Std	5 Std
GR. A	11	1	5	2	3	GR. A	11	7	8	5	5
GR. B	0	4	3	4	1	GR. B	0	0	0	2	2
GR. C	0	2	2	3	3	GR. C	0	1	2	2	0
GR. D	0	1	0	0	0	GR. D	0	0	0	0	0
GR. E	0	0	0	0	0	GR. E	0	0	0	0	0

# DEAL POST TEST 2019-20 - SCHOOL REPORT CARD

KARAIKAL  
DIS Z1

34040601407 GPS - KILINJAL MEDU

All Grades represent the following scorings in % \*

GRADE A - >75	
GRADE B - 51 TO 75	* School Status Grade
GRADE C - 26 TO 50	represents the total
GRADE D - 10 TO 25	enrollment of the
GRADE E - <10	school (Not %)

Note: The Values given in the brackets denote the difference between the Pre and Post Test Scores.  
(For Example: If the Pre-Test Grade is 'C' and the Post-Test Grade is 'A', then the progress is +2)

## SCHOOL GRADE - AB

Status Gr. A (0) Performance Gr. B (0)

### OVERALL PERFORMANCE GRADES

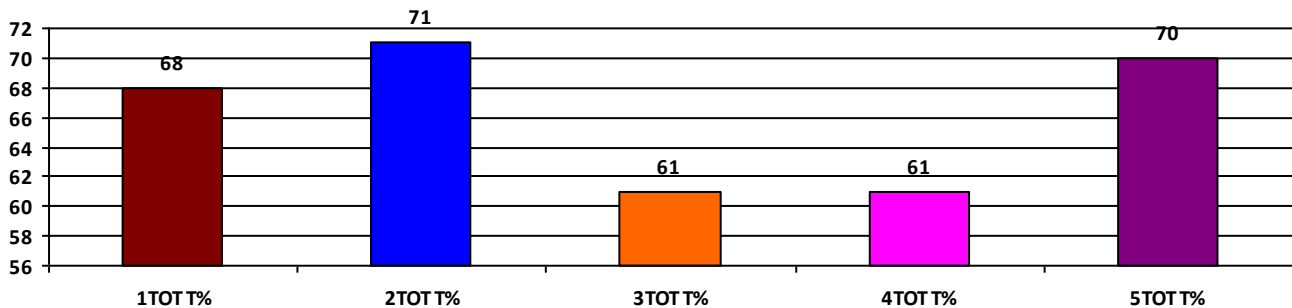
	Boys	Girls	Total
SCHOOL GR.	B	B	B
Diff. to Pre-Test	(0)	(0)	(0)
DIST. GR.	B	B	B
STATE GR.	B	B	B

### CLASSWISE APPEARED

DETAILS	I STD	II STD	III STD	IV STD	V STD
BOYS	9	5	12	6	10
GIRLS	13	7	5	11	8
TOTAL	22	12	17	17	18
Diff. to Pre-Test	(+2)	(-1)	(0)	(+2)	(0)

### CLASSWISE PERFORMANCE GRADES (% of marks)

DETAILS	I STD	II STD	III STD	IV STD	V STD
%	68	71	61	61	70
SCHOOL GR.	B	B	B	B	B
Diff. to Pre-Test	(0)	(0)	(0)	(0)	(0)
DIST. GR.	B	B	B	B	B
STATE GR.	A	B	B	B	B



### GRADEWISE PERFORMANCE (NO. OF STUDENTS)

ENGLISH	1 Std	2 Std	3 Std	4 Std	5 Std	TAMIL	1 Std	2 Std	3 Std	4 Std	5 Std
GR. A	3	2	0	3	4	GR. A	12	6	11	9	14
GR. B	13	8	9	4	9	GR. B	8	5	3	7	2
GR. C	6	2	7	9	4	GR. C	2	1	3	0	2
GR. D	0	0	1	1	1	GR. D	0	0	0	1	0
GR. E	0	0	0	0	0	GR. E	0	0	0	0	0

# DEAL POST TEST 2019-20 - SCHOOL REPORT CARD

KARAIKAL  
DIS Z1

34040601408 **GPS - NEHRU NAGAR**

All Grades represent the following scorings in % \*

GRADE A - >75	* School Status Grade represents the total enrollment of the school (Not %)
GRADE B - 51 TO 75	
GRADE C - 26 TO 50	
GRADE D - 10 TO 25	
GRADE E - <10	

Note: The Values given in the brackets denote the difference between the Pre and Post Test Scores.  
(For Example: If the Pre-Test Grade is 'C' and the Post-Test Grade is 'A', then the progress is +2)

## SCHOOL GRADE - AB

Status Gr. A (0) Performance Gr. B(+1)

### OVERALL PERFORMANCE GRADES

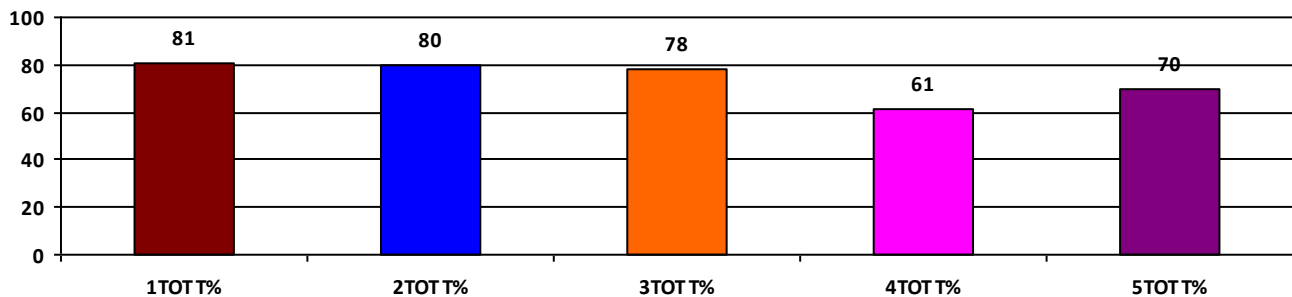
	Boys	Girls	Total
SCHOOL GR.	B	A	B
Diff. to Pre-Test	(+1)	(+2)	(+1)
DIST. GR.	B	B	B
STATE GR.	B	B	B

### CLASSWISE APPEARED

DETAILS	I STD	II STD	III STD	IV STD	V STD
BOYS	15	12	17	22	23
GIRLS	15	19	15	14	16
TOTAL	30	31	32	36	39
Diff. to Pre-Test	(+2)	(0)	(-1)	(0)	(-1)

### CLASSWISE PERFORMANCE GRADES (% of marks)

DETAILS	I STD	II STD	III STD	IV STD	V STD
%	81	80	78	61	70
SCHOOL GR.	A	A	A	B	B
Diff. to Pre-Test	(+1)	(+2)	(+2)	(+1)	(0)
DIST. GR.	B	B	B	B	B
STATE GR.	A	B	B	B	B



### GRADEWISE PERFORMANCE (NO. OF STUDENTS)

ENGLISH	1 Std	2 Std	3 Std	4 Std	5 Std	TAMIL	1 Std	2 Std	3 Std	4 Std	5 Std
GR. A	17	26	21	8	15	GR. A	25	21	24	10	22
GR. B	7	3	4	16	10	GR. B	0	4	2	15	12
GR. C	4	2	2	11	10	GR. C	5	2	1	10	4
GR. D	2	0	5	1	3	GR. D	0	4	5	1	1
GR. E	0	0	0	0	1	GR. E	0	0	0	0	0

# DEAL POST TEST 2019-20 - SCHOOL REPORT CARD

KARAIKAL  
DIS Z1

34040603801 **GPS - DHARMAPURAM**

All Grades represent the following scorings in % \*

GRADE A - >75	* School Status Grade represents the total enrollment of the school (Not %)
GRADE B - 51 TO 75	
GRADE C - 26 TO 50	
GRADE D - 10 TO 25	
GRADE E - <10	

Note: The Values given in the brackets denote the difference between the Pre and Post Test Scores.  
(For Example: If the Pre-Test Grade is 'C' and the Post-Test Grade is 'A', then the progress is +2)

## SCHOOL GRADE - CB

Status Gr. C (0) Performance Gr. B (0)

### OVERALL PERFORMANCE GRADES

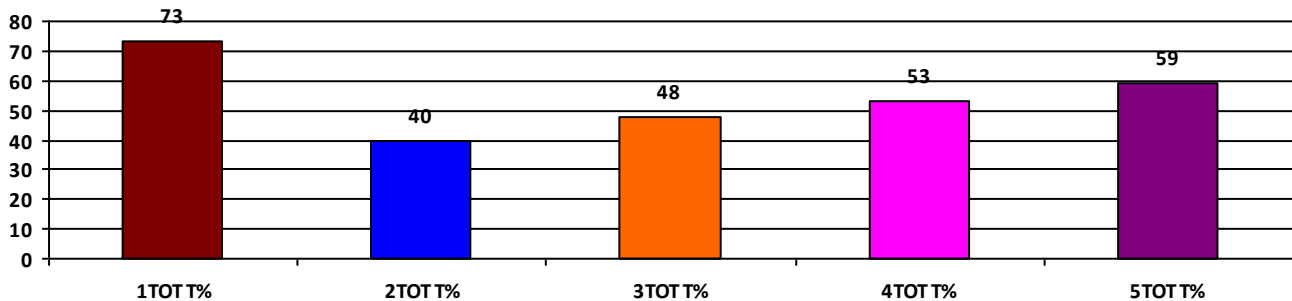
	Boys	Girls	Total
SCHOOL GR.	B	B	B
Diff. to Pre-Test	(0)	(0)	(0)
DIST. GR.	B	B	B
STATE GR.	B	B	B

### CLASSWISE APPEARED

DETAILS	I STD	II STD	III STD	IV STD	V STD
BOYS	2	2	4	5	4
GIRLS	4	4	2	4	6
TOTAL	6	6	6	9	10
Diff. to Pre-Test	(-2)	(+1)	(0)	(0)	(0)

### CLASSWISE PERFORMANCE GRADES (% of marks)

DETAILS	I STD	II STD	III STD	IV STD	V STD
%	73	40	48	53	59
SCHOOL GR.	B	C	C	B	B
Diff. to Pre-Test	(0)	(0)	(-1)	(0)	(+1)
DIST. GR.	B	B	B	B	B
STATE GR.	A	B	B	B	B



### GRADEWISE PERFORMANCE (NO. OF STUDENTS)

ENGLISH	1 Std	2 Std	3 Std	4 Std	5 Std	TAMIL	1 Std	2 Std	3 Std	4 Std	5 Std
GR. A	0	0	0	0	2	GR. A	5	0	0	2	4
GR. B	6	2	2	3	4	GR. B	1	2	3	5	5
GR. C	0	3	3	5	3	GR. C	0	2	3	2	0
GR. D	0	1	1	1	0	GR. D	0	2	0	0	1
GR. E	0	0	0	0	1	GR. E	0	0	0	0	0



# DEAL POST TEST 2019-20 - SCHOOL REPORT CARD

KARAIKAL  
DIS Z1

34040603804 **GPS - PATCHUR**

All Grades represent the following scorings in % \*

GRADE A - >75	* School Status Grade represents the total enrollment of the school (Not %)
GRADE B - 51 TO 75	
GRADE C - 26 TO 50	
GRADE D - 10 TO 25	
GRADE E - <10	

Note: The Values given in the brackets denote the difference between the Pre and Post Test Scores.  
(For Example: If the Pre-Test Grade is 'C' and the Post-Test Grade is 'A', then the progress is +2)

## SCHOOL GRADE - DA

Status Gr. D (0)      Performance Gr. A(+1)

### OVERALL PERFORMANCE GRADES

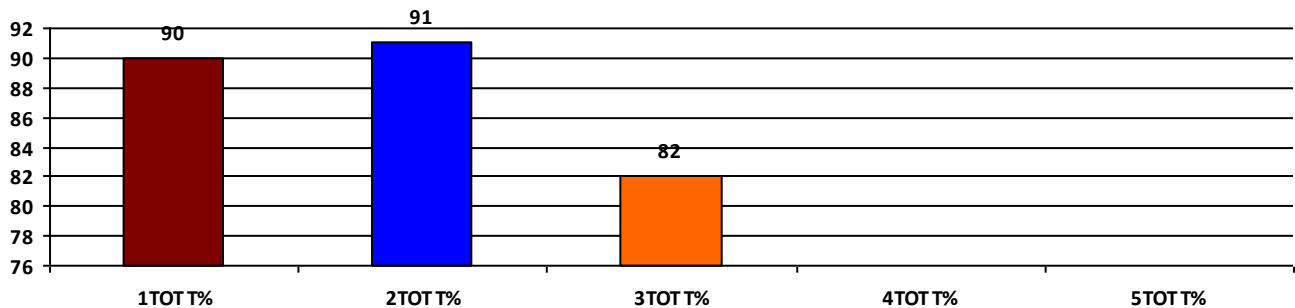
	Boys	Girls	Total
SCHOOL GR.	A	A	A
Diff. to Pre-Test	(+1)	(+1)	(+1)
DIST. GR.	B	B	B
STATE GR.	B	B	B

### CLASSWISE APPEARED

DETAILS	I STD	II STD	III STD	IV STD	V STD
BOYS	3	2	2	0	0
GIRLS	2	0	1	0	0
TOTAL	5	2	3	0	0
Diff. to Pre-Test	(0)	(0)	(+1)	(0)	(0)

### CLASSWISE PERFORMANCE GRADES (% of marks)

DETAILS	I STD	II STD	III STD	IV STD	V STD
%	90	91	82	NA	NA
SCHOOL GR.	A	A	A	NA	NA
Diff. to Pre-Test	(+1)	(+2)	(+1)	(+8)	(+8)
DIST. GR.	B	B	B	B	B
STATE GR.	A	B	B	B	B



### GRADEWISE PERFORMANCE (NO. OF STUDENTS)

ENGLISH	1 Std	2 Std	3 Std	4 Std	5 Std	TAMIL	1 Std	2 Std	3 Std	4 Std	5 Std
GR. A	5	1	1	0	0	GR. A	3	2	3	0	0
GR. B	0	1	2	0	0	GR. B	2	0	0	0	0
GR. C	0	0	0	0	0	GR. C	0	0	0	0	0
GR. D	0	0	0	0	0	GR. D	0	0	0	0	0
GR. E	0	0	0	0	0	GR. E	0	0	0	0	0

# DEAL POST TEST 2019-20 - SCHOOL REPORT CARD

KARAIKAL  
DIS Z1

34040608701 **GPS - NEDUNGADU**

All Grades represent the following scorings in % \*

GRADE A - >75	* School Status Grade represents the total enrollment of the school (Not %)
GRADE B - 51 TO 75	
GRADE C - 26 TO 50	
GRADE D - 10 TO 25	
GRADE E - <10	

Note: The Values given in the brackets denote the difference between the Pre and Post Test Scores.  
(For Example: If the Pre-Test Grade is 'C' and the Post-Test Grade is 'A', then the progress is +2)

## SCHOOL GRADE - AB

Status Gr. A (0)	Performance Gr. B (0)
------------------	-----------------------

### OVERALL PERFORMANCE GRADES

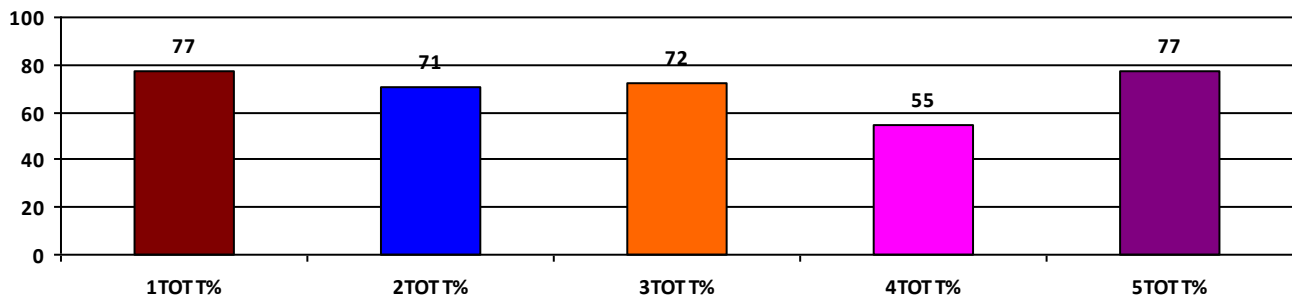
	Boys	Girls	Total
SCHOOL GR.	B	A	B
Diff. to Pre-Test	(0)	(+1)	(0)
DIST. GR.	B	B	B
STATE GR.	B	B	B

### CLASSWISE APPEARED

DETAILS	I STD	II STD	III STD	IV STD	V STD
BOYS	7	10	6	8	6
GIRLS	1	10	8	7	13
TOTAL	8	20	14	15	19
Diff. to Pre-Test	(-2)	(+2)	(+2)	(+1)	(-2)

### CLASSWISE PERFORMANCE GRADES (% of marks)

DETAILS	I STD	II STD	III STD	IV STD	V STD
%	77	71	72	55	77
SCHOOL GR.	A	B	B	B	A
Diff. to Pre-Test	(0)	(+1)	(0)	(+1)	(+1)
DIST. GR.	B	B	B	B	B
STATE GR.	A	B	B	B	B



### GRADEWISE PERFORMANCE (NO. OF STUDENTS)

ENGLISH	1 Std	2 Std	3 Std	4 Std	5 Std	TAMIL	1 Std	2 Std	3 Std	4 Std	5 Std
GR. A	4	12	6	1	16	GR. A	5	10	9	5	14
GR. B	3	4	5	6	0	GR. B	2	6	2	5	2
GR. C	1	0	3	5	2	GR. C	1	3	3	3	1
GR. D	0	3	0	3	0	GR. D	0	1	0	2	2
GR. E	0	1	0	0	1	GR. E	0	0	0	0	0

# DEAL POST TEST 2019-20 - SCHOOL REPORT CARD

KARAIKAL  
DIS Z1

34040608708 GPS - NALLATHUR

All Grades represent the following scorings in % \*

GRADE A - >75	
GRADE B - 51 TO 75	* School Status Grade
GRADE C - 26 TO 50	represents the total
GRADE D - 10 TO 25	enrollment of the
GRADE E - <10	school (Not %)

Note: The Values given in the brackets denote the difference between the Pre and Post Test Scores.  
(For Example: If the Pre-Test Grade is 'C' and the Post-Test Grade is 'A', then the progress is +2)

## SCHOOL GRADE - CB

Status Gr. C (0) Performance Gr. B (0)

### OVERALL PERFORMANCE GRADES

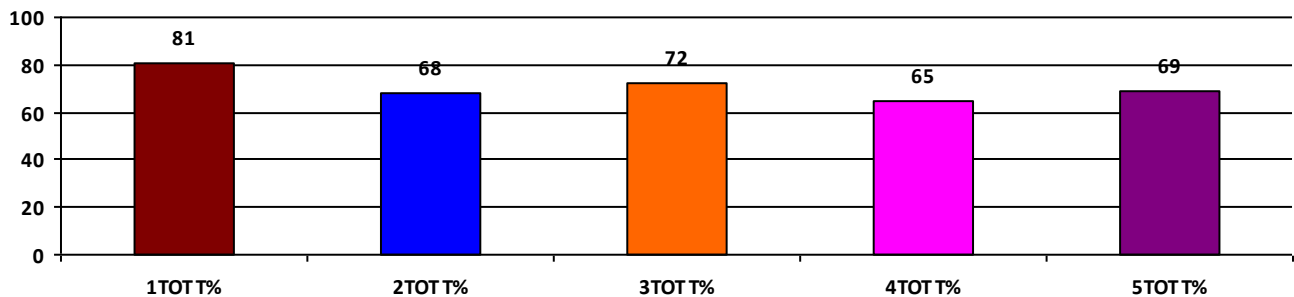
	Boys	Girls	Total
SCHOOL GR.	B	A	B
Diff. to Pre-Test	(+1)	(+1)	(0)
DIST. GR.	B	B	B
STATE GR.	B	B	B

### CLASSWISE APPEARED

DETAILS	I STD	II STD	III STD	IV STD	V STD
BOYS	1	3	4	4	1
GIRLS	3	6	2	2	0
TOTAL	4	9	6	6	1
Diff. to Pre-Test	(0)	(+3)	(+1)	(0)	(0)

### CLASSWISE PERFORMANCE GRADES (% of marks)

DETAILS	I STD	II STD	III STD	IV STD	V STD
%	81	68	72	65	69
SCHOOL GR.	A	B	B	B	B
Diff. to Pre-Test	(+1)	(+1)	(0)	(+1)	(+1)
DIST. GR.	B	B	B	B	B
STATE GR.	A	B	B	B	B



### GRADEWISE PERFORMANCE (NO. OF STUDENTS)

ENGLISH	1 Std	2 Std	3 Std	4 Std	5 Std	TAMIL	1 Std	2 Std	3 Std	4 Std	5 Std
GR. A	2	6	3	0	0	GR. A	2	1	3	2	1
GR. B	2	2	1	5	1	GR. B	2	6	3	4	0
GR. C	0	1	2	1	0	GR. C	0	2	0	0	0
GR. D	0	0	0	0	0	GR. D	0	0	0	0	0
GR. E	0	0	0	0	0	GR. E	0	0	0	0	0

# DEAL POST TEST 2019-20 - SCHOOL REPORT CARD

KARAIKAL  
DIS Z1

34040608902 **GPS - PUTHAKUDY**

All Grades represent the following scorings in % \*

GRADE A - >75	
GRADE B - 51 TO 75	* School Status Grade
GRADE C - 26 TO 50	represents the total
GRADE D - 10 TO 25	enrollment of the
GRADE E - <10	school (Not %)

Note: The Values given in the brackets denote the difference between the Pre and Post Test Scores.  
(For Example: If the Pre-Test Grade is 'C' and the Post-Test Grade is 'A', then the progress is +2)

## SCHOOL GRADE - BB

Status Gr. B (0) Performance Gr. B(+1)

### OVERALL PERFORMANCE GRADES

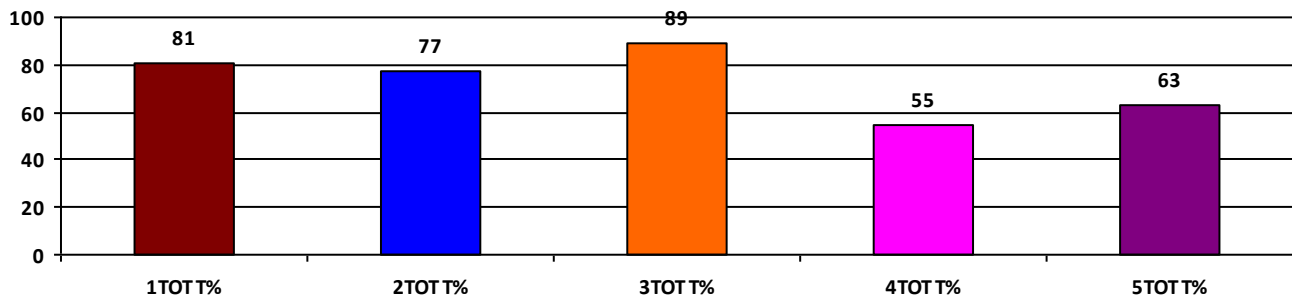
	Boys	Girls	Total
SCHOOL GR.	B	B	B
Diff. to Pre-Test	(+1)	(+1)	(+1)
DIST. GR.	B	B	B
STATE GR.	B	B	B

### CLASSWISE APPEARED

DETAILS	I STD	II STD	III STD	IV STD	V STD
BOYS	2	6	5	8	11
GIRLS	7	3	6	8	4
TOTAL	9	9	11	16	15
Diff. to Pre-Test	(0)	(+1)	(0)	(+1)	(0)

### CLASSWISE PERFORMANCE GRADES (% of marks)

DETAILS	I STD	II STD	III STD	IV STD	V STD
%	81	77	89	55	63
SCHOOL GR.	A	A	A	B	B
Diff. to Pre-Test	(+2)	(+2)	(+1)	(+1)	(+1)
DIST. GR.	B	B	B	B	B
STATE GR.	A	B	B	B	B



### GRADEWISE PERFORMANCE (NO. OF STUDENTS)

ENGLISH	1 Std	2 Std	3 Std	4 Std	5 Std	TAMIL	1 Std	2 Std	3 Std	4 Std	5 Std
GR. A	5	6	9	2	1	GR. A	7	4	10	9	8
GR. B	3	3	2	5	10	GR. B	2	4	1	1	3
GR. C	1	0	0	3	4	GR. C	0	1	0	3	4
GR. D	0	0	0	4	0	GR. D	0	0	0	3	0
GR. E	0	0	0	2	0	GR. E	0	0	0	0	0

# DEAL POST TEST 2019-20 - SCHOOL REPORT CARD

KARAIKAL  
DIS Z1

34040608903 **GPS - KOTTAGAM**

All Grades represent the following scorings in % \*

GRADE A - >75	* School Status Grade represents the total enrollment of the school (Not %)
GRADE B - 51 TO 75	
GRADE C - 26 TO 50	
GRADE D - 10 TO 25	
GRADE E - <10	

Note: The Values given in the brackets denote the difference between the Pre and Post Test Scores.  
(For Example: If the Pre-Test Grade is 'C' and the Post-Test Grade is 'A', then the progress is +2)

## SCHOOL GRADE - DA

Status Gr. D (0) Performance Gr. A(+1)

### OVERALL PERFORMANCE GRADES

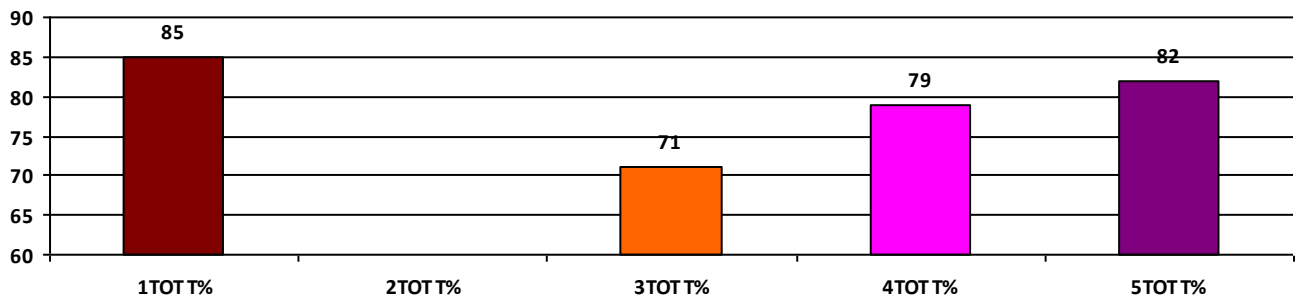
	Boys	Girls	Total
SCHOOL GR.	A	A	A
Diff. to Pre-Test	(+2)	(+1)	(+1)
DIST. GR.	B	B	B
STATE GR.	B	B	B

### CLASSWISE APPEARED

DETAILS	I STD	II STD	III STD	IV STD	V STD
BOYS	2	0	3	2	4
GIRLS	2	0	4	1	5
TOTAL	4	0	7	3	9
Diff. to Pre-Test	(-1)	(-1)	(0)	(0)	(0)

### CLASSWISE PERFORMANCE GRADES (% of marks)

DETAILS	I STD	II STD	III STD	IV STD	V STD
%	85	NA	71	79	82
SCHOOL GR.	A	NA	B	A	A
Diff. to Pre-Test	(+1)	(+8)	(+1)	(+3)	(+1)
DIST. GR.	B	B	B	B	B
STATE GR.	A	B	B	B	B



### GRADEWISE PERFORMANCE (NO. OF STUDENTS)

ENGLISH	1 Std	2 Std	3 Std	4 Std	5 Std	TAMIL	1 Std	2 Std	3 Std	4 Std	5 Std
GR. A	2	0	3	2	4	GR. A	4	0	2	2	9
GR. B	2	0	3	1	5	GR. B	0	0	3	1	0
GR. C	0	0	1	0	0	GR. C	0	0	2	0	0
GR. D	0	0	0	0	0	GR. D	0	0	0	0	0
GR. E	0	0	0	0	0	GR. E	0	0	0	0	0

# DEAL POST TEST 2019-20 - SCHOOL REPORT CARD

KARAIKAL  
DIS Z1

34040609301 **GPS - KURUMBAGAMPET**

All Grades represent the following scorings in % \*

GRADE A - >75	
GRADE B - 51 TO 75	* School Status Grade
GRADE C - 26 TO 50	represents the total
GRADE D - 10 TO 25	enrollment of the
GRADE E - <10	school (Not %)

Note: The Values given in the brackets denote the difference between the Pre and Post Test Scores.  
(For Example: If the Pre-Test Grade is 'C' and the Post-Test Grade is 'A', then the progress is +2)

## SCHOOL GRADE - CB

Status Gr. C (0) Performance Gr. B (0)

### OVERALL PERFORMANCE GRADES

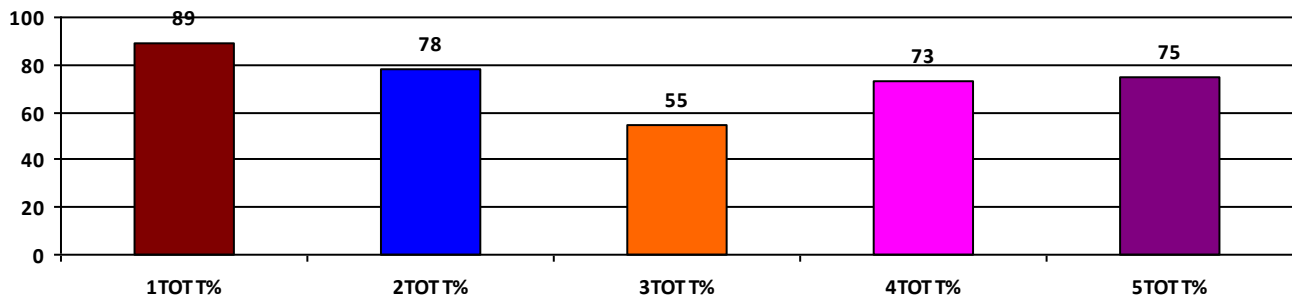
	Boys	Girls	Total
SCHOOL GR.	B	A	B
Diff. to Pre-Test	(0)	(+1)	(0)
DIST. GR.	B	B	B
STATE GR.	B	B	B

### CLASSWISE APPEARED

DETAILS	I STD	II STD	III STD	IV STD	V STD
BOYS	1	6	7	1	2
GIRLS	3	4	1	4	1
TOTAL	4	10	8	5	3
Diff. to Pre-Test	(-4)	(0)	(0)	(0)	(-1)

### CLASSWISE PERFORMANCE GRADES (% of marks)

DETAILS	I STD	II STD	III STD	IV STD	V STD
%	89	78	55	73	75
SCHOOL GR.	A	A	B	B	B
Diff. to Pre-Test	(0)	(+1)	(+1)	(0)	(-1)
DIST. GR.	B	B	B	B	B
STATE GR.	A	B	B	B	B



### GRADEWISE PERFORMANCE (NO. OF STUDENTS)

ENGLISH	1 Std	2 Std	3 Std	4 Std	5 Std	TAMIL	1 Std	2 Std	3 Std	4 Std	5 Std
GR. A	4	4	0	0	1	GR. A	4	6	2	5	2
GR. B	0	6	3	4	2	GR. B	0	3	4	0	1
GR. C	0	0	3	1	0	GR. C	0	1	2	0	0
GR. D	0	0	2	0	0	GR. D	0	0	0	0	0
GR. E	0	0	0	0	0	GR. E	0	0	0	0	0

# DEAL POST TEST 2019-20 - SCHOOL REPORT CARD

KARAIKAL  
DIS Z1

34040609304 **GPS - MATHALANGUDY**

All Grades represent the following scorings in % \*

GRADE A - >75	
GRADE B - 51 TO 75	* School Status Grade
GRADE C - 26 TO 50	represents the total
GRADE D - 10 TO 25	enrollment of the
GRADE E - <10	school (Not %)

Note: The Values given in the brackets denote the difference between the Pre and Post Test Scores.  
(For Example: If the Pre-Test Grade is 'C' and the Post-Test Grade is 'A', then the progress is +2)

## SCHOOL GRADE - CA

Status Gr. C (0) Performance Gr. A(+1)

### OVERALL PERFORMANCE GRADES

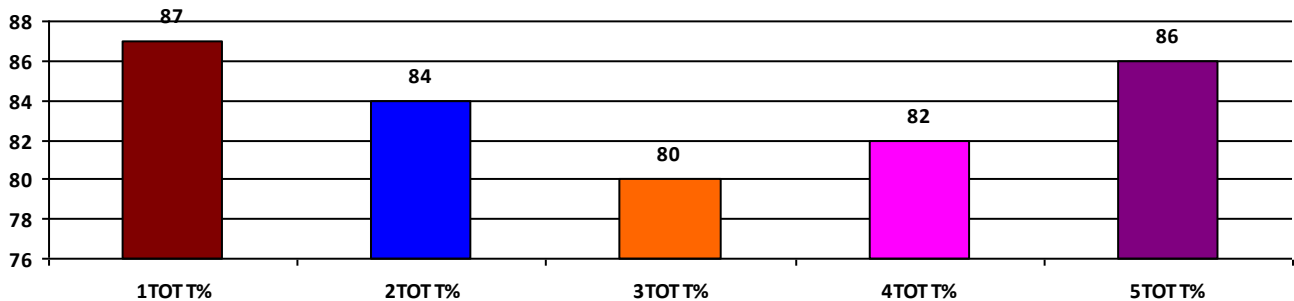
	Boys	Girls	Total
SCHOOL GR.	A	A	A
Diff. to Pre-Test	(+1)	(+1)	(+1)
DIST. GR.	B	B	B
STATE GR.	B	B	B

### CLASSWISE APPEARED

DETAILS	I STD	II STD	III STD	IV STD	V STD
BOYS	3	6	7	5	9
GIRLS	3	2	4	5	2
TOTAL	6	8	11	10	11
Diff. to Pre-Test	(0)	(0)	(0)	(0)	(0)

### CLASSWISE PERFORMANCE GRADES (% of marks)

DETAILS	I STD	II STD	III STD	IV STD	V STD
%	87	84	80	82	86
SCHOOL GR.	A	A	A	A	A
Diff. to Pre-Test	(+1)	(+1)	(+2)	(+1)	(+1)
DIST. GR.	B	B	B	B	B
STATE GR.	A	B	B	B	B



### GRADEWISE PERFORMANCE (NO. OF STUDENTS)

ENGLISH	1 Std	2 Std	3 Std	4 Std	5 Std	TAMIL	1 Std	2 Std	3 Std	4 Std	5 Std
GR. A	5	6	7	6	11	GR. A	5	6	10	9	7
GR. B	1	2	3	3	0	GR. B	0	2	0	0	4
GR. C	0	0	1	1	0	GR. C	1	0	1	1	0
GR. D	0	0	0	0	0	GR. D	0	0	0	0	0
GR. E	0	0	0	0	0	GR. E	0	0	0	0	0

# DEAL POST TEST 2019-20 - SCHOOL REPORT CARD

KARAIKAL  
DIS Z1

34040610903 GPS - ANNA NAGAR, KOTTUCHERRY

All Grades represent the following scorings in % \*

GRADE A - >75	
GRADE B - 51 TO 75	* School Status Grade
GRADE C - 26 TO 50	represents the total
GRADE D - 10 TO 25	enrollment of the
GRADE E - <10	school (Not %)

Note: The Values given in the brackets denote the difference between the Pre and Post Test Scores.  
(For Example: If the Pre-Test Grade is 'C' and the Post-Test Grade is 'A', then the progress is +2)

## SCHOOL GRADE - BB

Status Gr. B (-1) Performance Gr. B (0)

### OVERALL PERFORMANCE GRADES

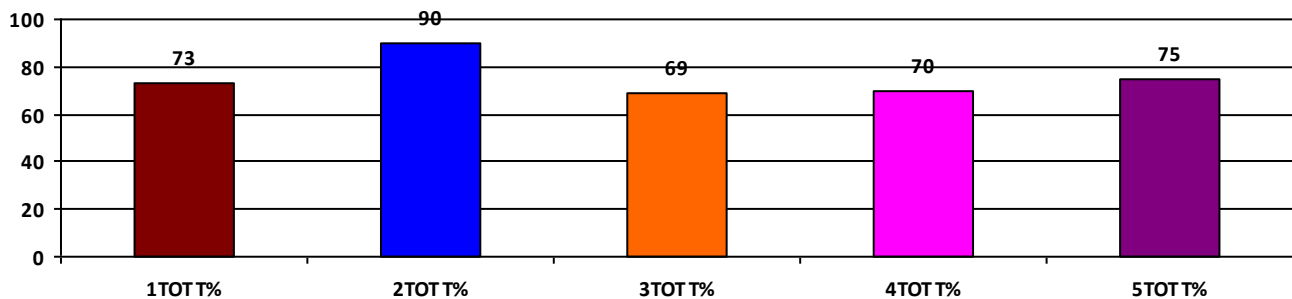
	Boys	Girls	Total
SCHOOL GR.	B	B	B
Diff. to Pre-Test	(0)	(0)	(0)
DIST. GR.	B	B	B
STATE GR.	B	B	B

### CLASSWISE APPEARED

DETAILS	I STD	II STD	III STD	IV STD	V STD
BOYS	3	6	4	13	8
GIRLS	9	7	11	7	7
TOTAL	12	13	15	20	15
Diff. to Pre-Test	(+1)	(0)	(0)	(0)	(+1)

### CLASSWISE PERFORMANCE GRADES (% of marks)

DETAILS	I STD	II STD	III STD	IV STD	V STD
%	73	90	69	70	75
SCHOOL GR.	B	A	B	B	B
Diff. to Pre-Test	(0)	(0)	(0)	(0)	(0)
DIST. GR.	B	B	B	B	B
STATE GR.	A	B	B	B	B



### GRADEWISE PERFORMANCE (NO. OF STUDENTS)

ENGLISH	1 Std	2 Std	3 Std	4 Std	5 Std	TAMIL	1 Std	2 Std	3 Std	4 Std	5 Std
GR. A	4	11	9	5	11	GR. A	8	11	5	9	9
GR. B	6	2	2	12	3	GR. B	3	2	6	10	2
GR. C	1	0	4	2	0	GR. C	1	0	4	1	3
GR. D	1	0	0	1	1	GR. D	0	0	0	0	1
GR. E	0	0	0	0	0	GR. E	0	0	0	0	0



# DEAL POST TEST 2019-20 - SCHOOL REPORT CARD

KARAIKAL  
DIS Z1

34040610904 GPS - PERIAPET, KARAIKAL

All Grades represent the following scorings in % \*

GRADE A - >75	* School Status Grade represents the total enrollment of the school (Not %)
GRADE B - 51 TO 75	
GRADE C - 26 TO 50	
GRADE D - 10 TO 25	
GRADE E - <10	

Note: The Values given in the brackets denote the difference between the Pre and Post Test Scores.  
(For Example: If the Pre-Test Grade is 'C' and the Post-Test Grade is 'A', then the progress is +2)

## SCHOOL GRADE - BB

Status Gr. B (0) Performance Gr. B (0)

### OVERALL PERFORMANCE GRADES

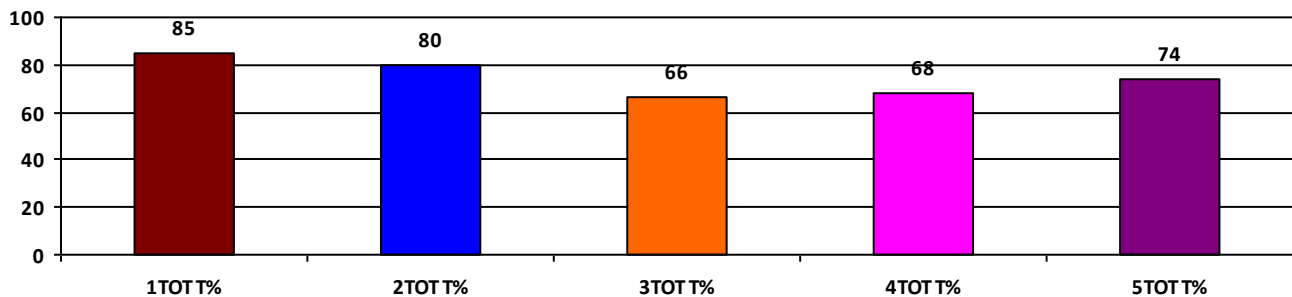
	Boys	Girls	Total
SCHOOL GR.	B	A	B
Diff. to Pre-Test	(0)	(+1)	(0)
DIST. GR.	B	B	B
STATE GR.	B	B	B

### CLASSWISE APPEARED

DETAILS	I STD	II STD	III STD	IV STD	V STD
BOYS	3	10	7	5	5
GIRLS	4	3	4	2	9
TOTAL	7	13	11	7	14
Diff. to Pre-Test	(-2)	(-2)	(0)	(-3)	(0)

### CLASSWISE PERFORMANCE GRADES (% of marks)

DETAILS	I STD	II STD	III STD	IV STD	V STD
%	85	80	66	68	74
SCHOOL GR.	A	A	B	B	B
Diff. to Pre-Test	(+1)	(+1)	(0)	(0)	(0)
DIST. GR.	B	B	B	B	B
STATE GR.	A	B	B	B	B



### GRADEWISE PERFORMANCE (NO. OF STUDENTS)

ENGLISH	1 Std	2 Std	3 Std	4 Std	5 Std	TAMIL	1 Std	2 Std	3 Std	4 Std	5 Std
GR. A	6	8	3	3	9	GR. A	6	11	7	4	7
GR. B	0	3	3	3	4	GR. B	1	2	3	2	3
GR. C	0	2	5	0	1	GR. C	0	0	1	1	3
GR. D	1	0	0	1	0	GR. D	0	0	0	0	1
GR. E	0	0	0	0	0	GR. E	0	0	0	0	0

# DEAL POST TEST 2019-20 - SCHOOL REPORT CARD

KARAIKAL  
DIS Z1

34040610905 **GPS - VARICHIKUDY**

All Grades represent the following scorings in % \*

GRADE A - >75	
GRADE B - 51 TO 75	* School Status Grade
GRADE C - 26 TO 50	represents the total
GRADE D - 10 TO 25	enrollment of the
GRADE E - <10	school (Not %)

Note: The Values given in the brackets denote the difference between the Pre and Post Test Scores.  
(For Example: If the Pre-Test Grade is 'C' and the Post-Test Grade is 'A', then the progress is +2)

## SCHOOL GRADE - BA

Status Gr. B (0) Performance Gr. A(+1)

### OVERALL PERFORMANCE GRADES

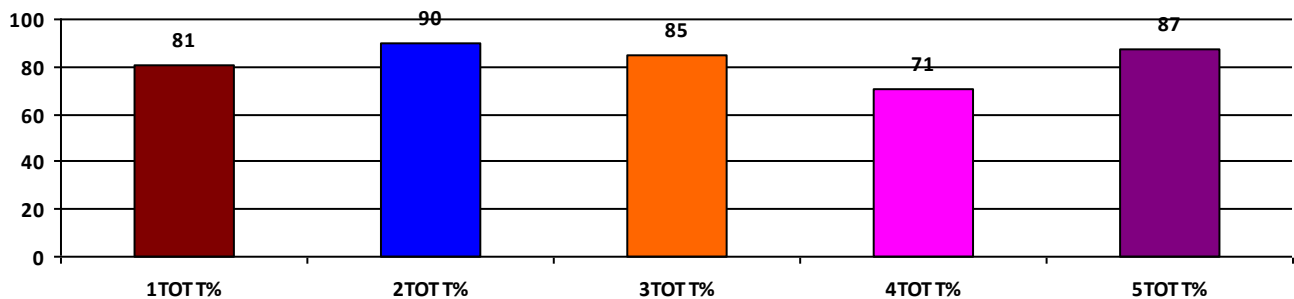
	Boys	Girls	Total
SCHOOL GR.	A	A	A
Diff. to Pre-Test	(+1)	(+1)	(+1)
DIST. GR.	B	B	B
STATE GR.	B	B	B

### CLASSWISE APPEARED

DETAILS	I STD	II STD	III STD	IV STD	V STD
BOYS	4	6	5	8	1
GIRLS	8	4	7	5	7
TOTAL	12	10	12	13	8
Diff. to Pre-Test	(0)	(0)	(+2)	(-3)	(-1)

### CLASSWISE PERFORMANCE GRADES (% of marks)

DETAILS	I STD	II STD	III STD	IV STD	V STD
%	81	90	85	71	87
SCHOOL GR.	A	A	A	B	A
Diff. to Pre-Test	(+2)	(+1)	(+2)	(0)	(+1)
DIST. GR.	B	B	B	B	B
STATE GR.	A	B	B	B	B



### GRADEWISE PERFORMANCE (NO. OF STUDENTS)

ENGLISH	1 Std	2 Std	3 Std	4 Std	5 Std	TAMIL	1 Std	2 Std	3 Std	4 Std	5 Std
GR. A	9	10	8	3	7	GR. A	7	9	11	7	7
GR. B	2	0	4	8	1	GR. B	3	1	1	3	1
GR. C	1	0	0	2	0	GR. C	2	0	0	3	0
GR. D	0	0	0	0	0	GR. D	0	0	0	0	0
GR. E	0	0	0	0	0	GR. E	0	0	0	0	0

# DEAL POST TEST 2019-20 - SCHOOL REPORT CARD

KARAIKAL  
DIS Z1

34040610906 **GPS - KOTTUCHERRY PET**

All Grades represent the following scorings in % \*

GRADE A - >75	* School Status Grade represents the total enrollment of the school (Not %)
GRADE B - 51 TO 75	
GRADE C - 26 TO 50	
GRADE D - 10 TO 25	
GRADE E - <10	

Note: The Values given in the brackets denote the difference between the Pre and Post Test Scores.  
(For Example: If the Pre-Test Grade is 'C' and the Post-Test Grade is 'A', then the progress is +2)

## SCHOOL GRADE - AB

Status Gr. A (0)	Performance Gr. B (0)
------------------	-----------------------

### OVERALL PERFORMANCE GRADES

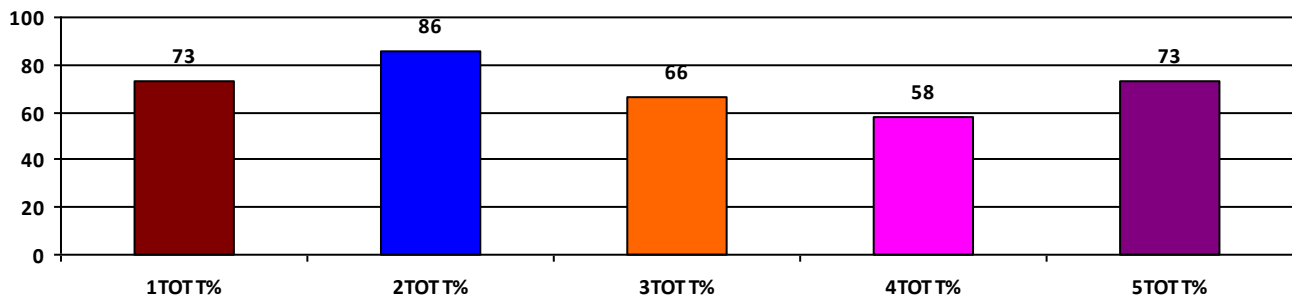
	Boys	Girls	Total
SCHOOL GR.	B	A	B
Diff. to Pre-Test	(+1)	(+1)	(0)
DIST. GR.	B	B	B
STATE GR.	B	B	B

### CLASSWISE APPEARED

DETAILS	I STD	II STD	III STD	IV STD	V STD
BOYS	11	17	19	20	14
GIRLS	19	10	25	11	12
TOTAL	30	27	44	31	26
Diff. to Pre-Test	(+2)	(-4)	(+2)	(-3)	(+2)

### CLASSWISE PERFORMANCE GRADES (% of marks)

DETAILS	I STD	II STD	III STD	IV STD	V STD
%	73	86	66	58	73
SCHOOL GR.	B	A	B	B	B
Diff. to Pre-Test	(0)	(+1)	(0)	(+1)	(0)
DIST. GR.	B	B	B	B	B
STATE GR.	A	B	B	B	B



### GRADEWISE PERFORMANCE (NO. OF STUDENTS)

ENGLISH	1 Std	2 Std	3 Std	4 Std	5 Std	TAMIL	1 Std	2 Std	3 Std	4 Std	5 Std
GR. A	12	19	13	7	17	GR. A	16	25	23	15	14
GR. B	13	7	16	10	5	GR. B	11	2	10	5	7
GR. C	2	1	13	10	1	GR. C	2	0	10	5	3
GR. D	3	0	2	2	3	GR. D	1	0	1	5	0
GR. E	0	0	0	2	0	GR. E	0	0	0	1	2

# DEAL POST TEST 2019-20 - SCHOOL REPORT CARD

KARAIKAL  
DIS Z1

34040610908 **GPS - KOTTUCHERRYMEDU**

All Grades represent the following scorings in % \*

GRADE A - >75	* School Status Grade represents the total enrollment of the school (Not %)
GRADE B - 51 TO 75	
GRADE C - 26 TO 50	
GRADE D - 10 TO 25	
GRADE E - <10	

Note: The Values given in the brackets denote the difference between the Pre and Post Test Scores.  
(For Example: If the Pre-Test Grade is 'C' and the Post-Test Grade is 'A', then the progress is +2)

## SCHOOL GRADE - BA

Status Gr. B (0) Performance Gr. A(+1)

### OVERALL PERFORMANCE GRADES

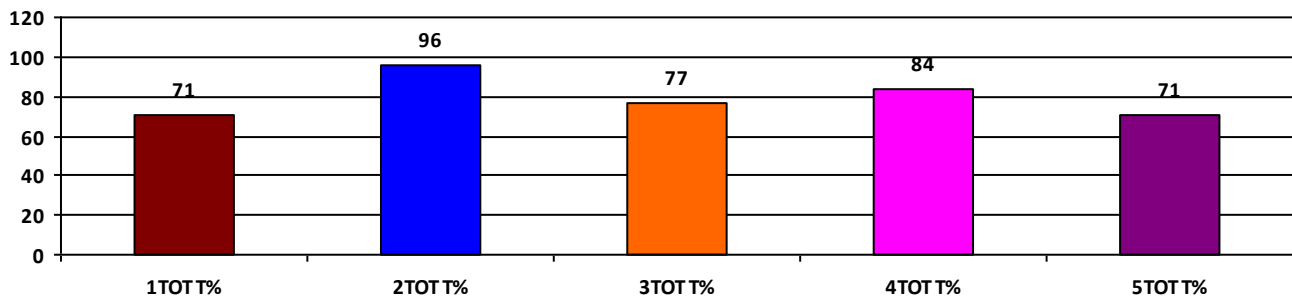
	Boys	Girls	Total
SCHOOL GR.	A	A	A
Diff. to Pre-Test	(+1)	(+1)	(+1)
DIST. GR.	B	B	B
STATE GR.	B	B	B

### CLASSWISE APPEARED

DETAILS	I STD	II STD	III STD	IV STD	V STD
BOYS	5	5	4	7	8
GIRLS	5	6	9	7	7
TOTAL	10	11	13	14	15
Diff. to Pre-Test	(-1)	(-1)	(0)	(0)	(0)

### CLASSWISE PERFORMANCE GRADES (% of marks)

DETAILS	I STD	II STD	III STD	IV STD	V STD
%	71	96	77	84	71
SCHOOL GR.	B	A	A	A	B
Diff. to Pre-Test	(0)	(+1)	(+1)	(+1)	(0)
DIST. GR.	B	B	B	B	B
STATE GR.	A	B	B	B	B



### GRADEWISE PERFORMANCE (NO. OF STUDENTS)

ENGLISH	1 Std	2 Std	3 Std	4 Std	5 Std	TAMIL	1 Std	2 Std	3 Std	4 Std	5 Std
GR. A	7	11	6	10	8	GR. A	6	11	10	13	9
GR. B	2	0	4	4	4	GR. B	3	0	3	1	3
GR. C	0	0	3	0	1	GR. C	0	0	0	0	2
GR. D	0	0	0	0	2	GR. D	1	0	0	0	1
GR. E	1	0	0	0	0	GR. E	0	0	0	0	0

# DEAL POST TEST 2019-20 - SCHOOL REPORT CARD

KARAIKAL  
DIS Z1

34040612301 GPS - THOMAS ARUL STREET, KARAIKAL

All Grades represent the following scorings in % \*

GRADE A - >75	
GRADE B - 51 TO 75	* School Status Grade
GRADE C - 26 TO 50	represents the total
GRADE D - 10 TO 25	enrollment of the
GRADE E - <10	school (Not %)

Note: The Values given in the brackets denote the difference between the Pre and Post Test Scores.  
(For Example: If the Pre-Test Grade is 'C' and the Post-Test Grade is 'A', then the progress is +2)

## SCHOOL GRADE - BB

Status Gr. B (0) Performance Gr. B(+1)

### OVERALL PERFORMANCE GRADES

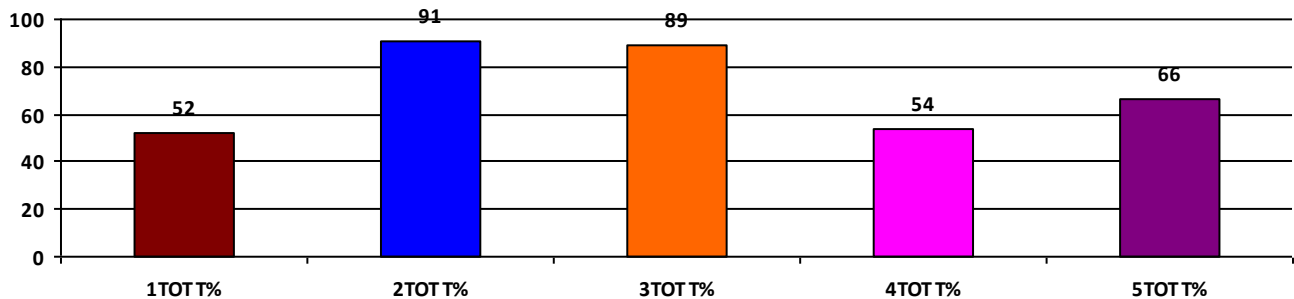
	Boys	Girls	Total
SCHOOL GR.	B	B	B
Diff. to Pre-Test	(+1)	(+1)	(+1)
DIST. GR.	B	B	B
STATE GR.	B	B	B

### CLASSWISE APPEARED

DETAILS	I STD	II STD	III STD	IV STD	V STD
BOYS	6	3	2	10	4
GIRLS	7	6	7	7	8
TOTAL	13	9	9	17	12
Diff. to Pre-Test	(-1)	(+2)	(+1)	(-1)	(-2)

### CLASSWISE PERFORMANCE GRADES (% of marks)

DETAILS	I STD	II STD	III STD	IV STD	V STD
%	52	91	89	54	66
SCHOOL GR.	B	A	A	B	B
Diff. to Pre-Test	(+2)	(+2)	(+1)	(+1)	(+1)
DIST. GR.	B	B	B	B	B
STATE GR.	A	B	B	B	B



### GRADEWISE PERFORMANCE (NO. OF STUDENTS)

ENGLISH	1 Std	2 Std	3 Std	4 Std	5 Std	TAMIL	1 Std	2 Std	3 Std	4 Std	5 Std
GR. A	0	9	9	1	4	GR. A	1	8	9	1	4
GR. B	7	0	0	8	4	GR. B	7	1	0	10	6
GR. C	5	0	0	7	4	GR. C	4	0	0	5	2
GR. D	1	0	0	1	0	GR. D	1	0	0	1	0
GR. E	0	0	0	0	0	GR. E	0	0	0	0	0

# DEAL POST TEST 2019-20 - SCHOOL REPORT CARD

KARAIKAL  
DIS Z1

34040612602 **GPS - PILLAITHERUVASAL**

All Grades represent the following scorings in % \*

GRADE A - >75	
GRADE B - 51 TO 75	* School Status Grade
GRADE C - 26 TO 50	represents the total
GRADE D - 10 TO 25	enrollment of the
GRADE E - <10	school (Not %)

Note: The Values given in the brackets denote the difference between the Pre and Post Test Scores.  
(For Example: If the Pre-Test Grade is 'C' and the Post-Test Grade is 'A', then the progress is +2)

## SCHOOL GRADE - CB

Status Gr. C (-1) Performance Gr. B (0)

### OVERALL PERFORMANCE GRADES

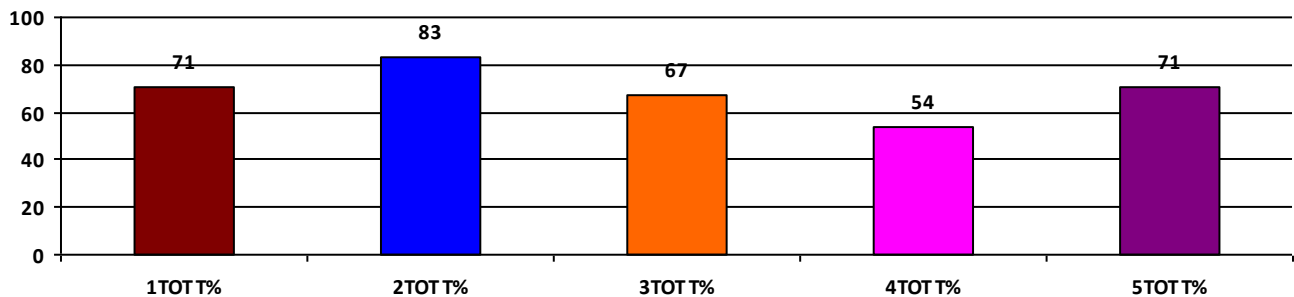
	Boys	Girls	Total
SCHOOL GR.	B	B	B
Diff. to Pre-Test	(0)	(0)	(0)
DIST. GR.	B	B	B
STATE GR.	B	B	B

### CLASSWISE APPEARED

DETAILS	I STD	II STD	III STD	IV STD	V STD
BOYS	8	4	5	7	4
GIRLS	3	4	4	7	4
TOTAL	11	8	9	14	8
Diff. to Pre-Test	(+2)	(+1)	(+1)	(+4)	(0)

### CLASSWISE PERFORMANCE GRADES (% of marks)

DETAILS	I STD	II STD	III STD	IV STD	V STD
%	71	83	67	54	71
SCHOOL GR.	B	A	B	B	B
Diff. to Pre-Test	(0)	(+1)	(+1)	(-1)	(0)
DIST. GR.	B	B	B	B	B
STATE GR.	A	B	B	B	B



### GRADEWISE PERFORMANCE (NO. OF STUDENTS)

ENGLISH	1 Std	2 Std	3 Std	4 Std	5 Std	TAMIL	1 Std	2 Std	3 Std	4 Std	5 Std
GR. A	5	6	3	1	3	GR. A	4	5	3	4	3
GR. B	5	2	4	6	4	GR. B	6	3	4	5	4
GR. C	1	0	2	7	1	GR. C	1	0	2	5	0
GR. D	0	0	0	0	0	GR. D	0	0	0	0	1
GR. E	0	0	0	0	0	GR. E	0	0	0	0	0

# DEAL POST TEST 2019-20 - SCHOOL REPORT CARD

KARAIKAL  
DIS Z1

34040612604 GPS - VADAMARAICADU (EAST), KARAIKAL

All Grades represent the following scorings in % \*

GRADE A - >75	* School Status Grade represents the total enrollment of the school (Not %)
GRADE B - 51 TO 75	
GRADE C - 26 TO 50	
GRADE D - 10 TO 25	
GRADE E - <10	

Note: The Values given in the brackets denote the difference between the Pre and Post Test Scores.  
(For Example: If the Pre-Test Grade is 'C' and the Post-Test Grade is 'A', then the progress is +2)

## SCHOOL GRADE - AB

Status Gr. A (0) Performance Gr. B(+1)

### OVERALL PERFORMANCE GRADES

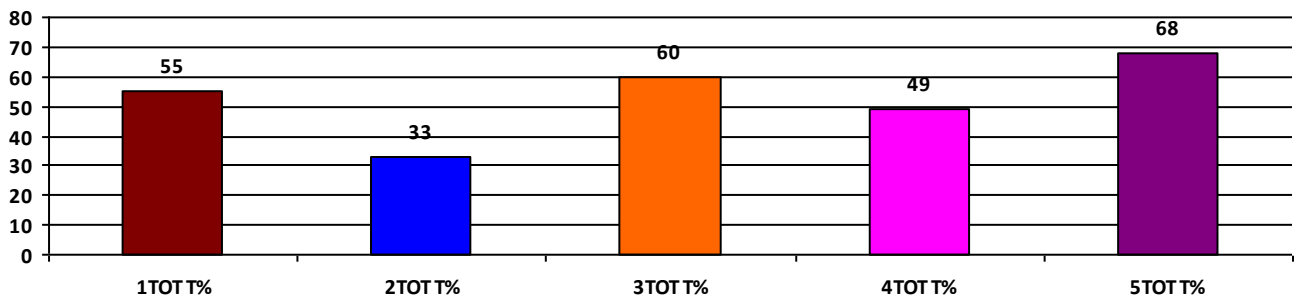
	Boys	Girls	Total
SCHOOL GR.	B	B	B
Diff. to Pre-Test	(+1)	(0)	(+1)
DIST. GR.	B	B	B
STATE GR.	B	B	B

### CLASSWISE APPEARED

DETAILS	I STD	II STD	III STD	IV STD	V STD
BOYS	21	18	34	26	25
GIRLS	25	21	23	30	33
TOTAL	46	39	57	56	58
Diff. to Pre-Test	(-9)	(-5)	(-5)	(-1)	(+3)

### CLASSWISE PERFORMANCE GRADES (% of marks)

DETAILS	I STD	II STD	III STD	IV STD	V STD
%	55	33	60	49	68
SCHOOL GR.	B	C	B	C	B
Diff. to Pre-Test	(+1)	(0)	(+1)	(-1)	(0)
DIST. GR.	B	B	B	B	B
STATE GR.	A	B	B	B	B



### GRADEWISE PERFORMANCE (NO. OF STUDENTS)

ENGLISH	1 Std	2 Std	3 Std	4 Std	5 Std	TAMIL	1 Std	2 Std	3 Std	4 Std	5 Std
GR. A	7	0	12	5	32	GR. A	12	2	23	12	29
GR. B	17	2	22	16	9	GR. B	21	7	20	15	14
GR. C	13	17	18	22	14	GR. C	6	21	10	22	9
GR. D	6	17	5	13	3	GR. D	5	8	3	7	5
GR. E	3	3	0	0	0	GR. E	2	1	1	0	1

# DEAL POST TEST 2019-20 - SCHOOL REPORT CARD

KARAIKAL  
DIS Z1

34040612624 GPS - P.K. SALAI, KARAIKAL

All Grades represent the following scorings in % \*

GRADE A - >75	* School Status Grade represents the total enrollment of the school (Not %)
GRADE B - 51 TO 75	
GRADE C - 26 TO 50	
GRADE D - 10 TO 25	
GRADE E - <10	

Note: The Values given in the brackets denote the difference between the Pre and Post Test Scores.  
(For Example: If the Pre-Test Grade is 'C' and the Post-Test Grade is 'A', then the progress is +2)

## SCHOOL GRADE - AB

Status Gr. A (0)	Performance Gr. B (0)
------------------	-----------------------

### OVERALL PERFORMANCE GRADES

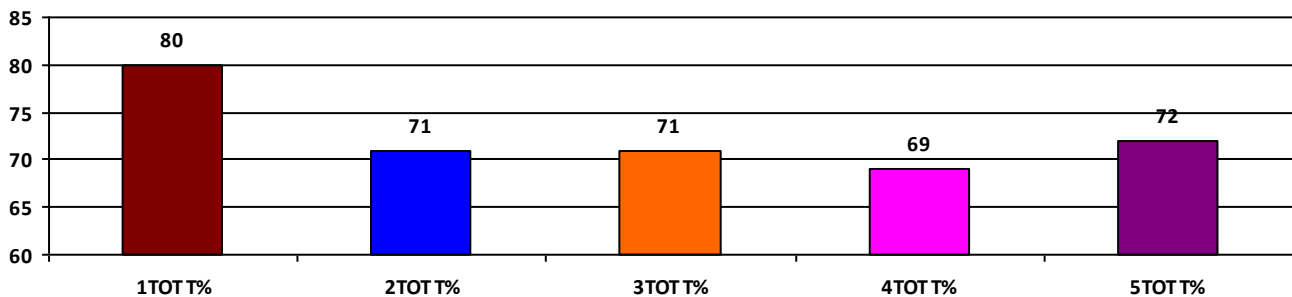
	Boys	Girls	Total
SCHOOL GR.	B	B	B
Diff. to Pre-Test	(0)	(0)	(0)
DIST. GR.	B	B	B
STATE GR.	B	B	B

### CLASSWISE APPEARED

DETAILS	I STD	II STD	III STD	IV STD	V STD
BOYS	8	4	10	11	10
GIRLS	10	4	8	9	11
TOTAL	18	8	18	20	21
Diff. to Pre-Test	(+1)	(0)	(0)	(0)	(+1)

### CLASSWISE PERFORMANCE GRADES (% of marks)

DETAILS	I STD	II STD	III STD	IV STD	V STD
%	80	71	71	69	72
SCHOOL GR.	A	B	B	B	B
Diff. to Pre-Test	(0)	(0)	(0)	(0)	(0)
DIST. GR.	B	B	B	B	B
STATE GR.	A	B	B	B	B



### GRADEWISE PERFORMANCE (NO. OF STUDENTS)

ENGLISH	1 Std	2 Std	3 Std	4 Std	5 Std	TAMIL	1 Std	2 Std	3 Std	4 Std	5 Std
GR. A	15	2	2	4	5	GR. A	12	5	14	10	11
GR. B	2	5	10	10	14	GR. B	5	1	3	10	9
GR. C	1	1	6	6	2	GR. C	1	2	1	0	1
GR. D	0	0	0	0	0	GR. D	0	0	0	0	0
GR. E	0	0	0	0	0	GR. E	0	0	0	0	0



# DEAL POST TEST 2019-20 - SCHOOL REPORT CARD

KARAIKAL  
DIS Z1

34040612903 **GPS - RAYANPALAYAM**

All Grades represent the following scorings in % \*

GRADE A - >75	
GRADE B - 51 TO 75	* School Status Grade
GRADE C - 26 TO 50	represents the total
GRADE D - 10 TO 25	enrollment of the
GRADE E - <10	school (Not %)

Note: The Values given in the brackets denote the difference between the Pre and Post Test Scores.  
(For Example: If the Pre-Test Grade is 'C' and the Post-Test Grade is 'A', then the progress is +2)

## SCHOOL GRADE - BB

Status Gr. B (+1) Performance Gr. B (0)

### OVERALL PERFORMANCE GRADES

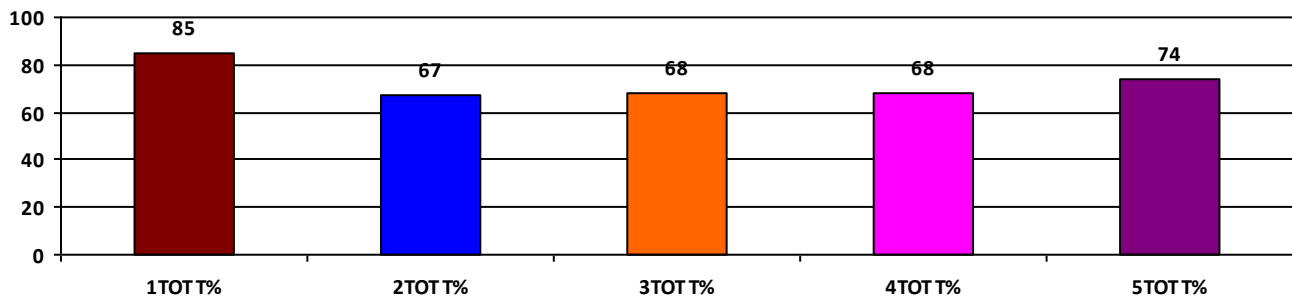
	Boys	Girls	Total
SCHOOL GR.	B	B	B
Diff. to Pre-Test	(0)	(0)	(0)
DIST. GR.	B	B	B
STATE GR.	B	B	B

### CLASSWISE APPEARED

DETAILS	I STD	II STD	III STD	IV STD	V STD
BOYS	7	6	5	7	4
GIRLS	3	4	7	5	2
TOTAL	10	10	12	12	6
Diff. to Pre-Test	(+3)	(+3)	(+2)	(+4)	(0)

### CLASSWISE PERFORMANCE GRADES (% of marks)

DETAILS	I STD	II STD	III STD	IV STD	V STD
%	85	67	68	68	74
SCHOOL GR.	A	B	B	B	B
Diff. to Pre-Test	(+1)	(0)	(+1)	(0)	(0)
DIST. GR.	B	B	B	B	B
STATE GR.	A	B	B	B	B



### GRADEWISE PERFORMANCE (NO. OF STUDENTS)

ENGLISH	1 Std	2 Std	3 Std	4 Std	5 Std	TAMIL	1 Std	2 Std	3 Std	4 Std	5 Std
GR. A	10	1	3	2	3	GR. A	6	5	6	7	4
GR. B	0	6	7	7	1	GR. B	4	4	4	4	2
GR. C	0	3	2	3	2	GR. C	0	1	2	1	0
GR. D	0	0	0	0	0	GR. D	0	0	0	0	0
GR. E	0	0	0	0	0	GR. E	0	0	0	0	0

# DEAL POST TEST 2019-20 - SCHOOL REPORT CARD

KARAIKAL  
DIS Z1

34040613003 **GPS - KONNAKAVALY**

All Grades represent the following scorings in % \*

GRADE A - >75	* School Status Grade represents the total enrollment of the school (Not %)
GRADE B - 51 TO 75	
GRADE C - 26 TO 50	
GRADE D - 10 TO 25	
GRADE E - <10	

Note: The Values given in the brackets denote the difference between the Pre and Post Test Scores.  
(For Example: If the Pre-Test Grade is 'C' and the Post-Test Grade is 'A', then the progress is +2)

## SCHOOL GRADE - DB

Status Gr. D (0) Performance Gr. B(+1)

### OVERALL PERFORMANCE GRADES

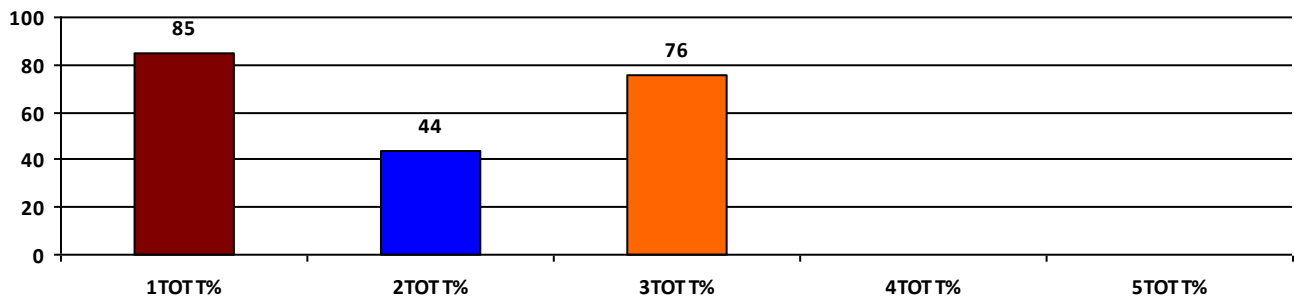
	Boys	Girls	Total
SCHOOL GR.	A	B	B
Diff. to Pre-Test	(+2)	(+1)	(+1)
DIST. GR.	B	B	B
STATE GR.	B	B	B

### CLASSWISE APPEARED

DETAILS	I STD	II STD	III STD	IV STD	V STD
BOYS	3	2	3	0	0
GIRLS	1	1	1	0	0
TOTAL	4	3	4	0	0
Diff. to Pre-Test	(0)	(0)	(0)	(0)	(0)

### CLASSWISE PERFORMANCE GRADES (% of marks)

DETAILS	I STD	II STD	III STD	IV STD	V STD
%	85	44	76	NA	NA
SCHOOL GR.	A	C	A	NA	NA
Diff. to Pre-Test	(+1)	(+1)	(+1)	(+8)	(+8)
DIST. GR.	B	B	B	B	B
STATE GR.	A	B	B	B	B



### GRADEWISE PERFORMANCE (NO. OF STUDENTS)

ENGLISH	1 Std	2 Std	3 Std	4 Std	5 Std	TAMIL	1 Std	2 Std	3 Std	4 Std	5 Std
GR. A	3	1	2	0	0	GR. A	4	0	2	0	0
GR. B	1	1	2	0	0	GR. B	0	1	2	0	0
GR. C	0	0	0	0	0	GR. C	0	1	0	0	0
GR. D	0	0	0	0	0	GR. D	0	0	0	0	0
GR. E	0	1	0	0	0	GR. E	0	1	0	0	0